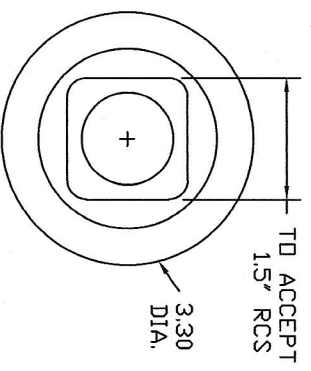
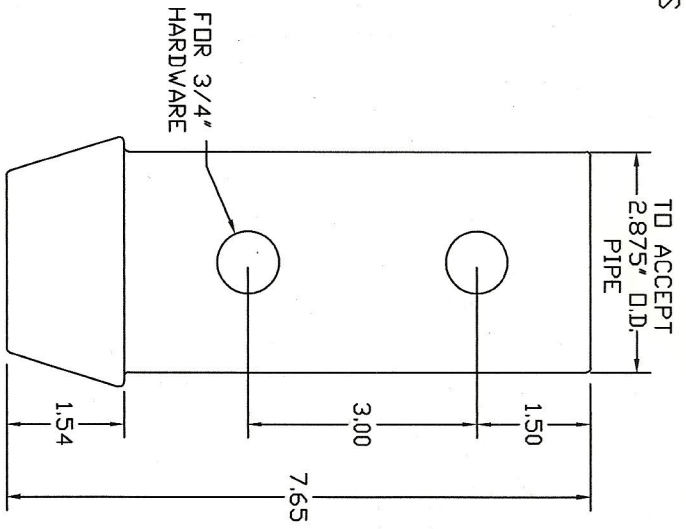
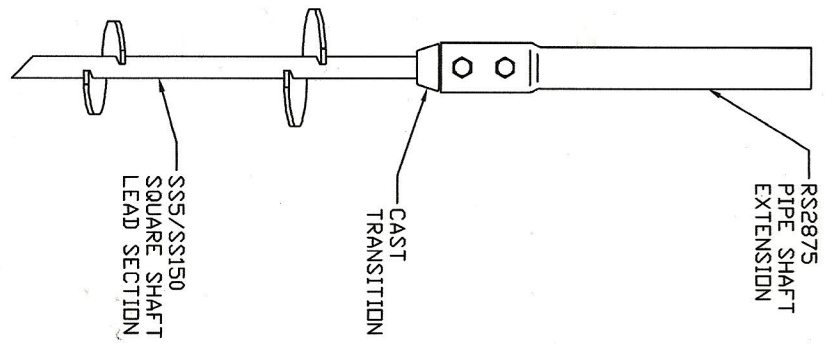
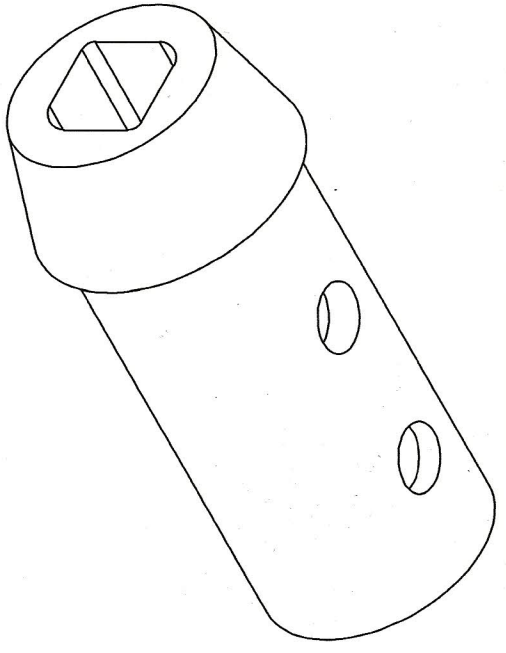


TORQUE RATING: 7,000 FT-LBS
 COMPRESSION RATING: 72 KIP
 TENSION RATING: 62 KIP



TYPICAL PIER ASSEMBLY

CATALOG NUMBER:
 C1500896



=NOTES=

1. MATERIAL: CAST DUCTILE IRON PER ASTM A536 65-45-12.
2. FINISH: HDT DIP GALVANIZED PER ASTM A153.
3. HARDWARE: USE STANDARD PIPE INCLUDED IN STANDARD PIPE SHAFT EXTENSION.

CHANCE <small>CONFIDENTIAL: THIS DRAWING AND ITS CONTENTS ARE CONFIDENTIAL AND THE PROPERTY OF HUBBELL POWER SYSTEMS. NO REPRODUCTION, DISTRIBUTION OR COPIES MAY BE MADE WITHOUT THE WRITTEN CONSENT OF HUBBELL POWER SYSTEMS. UNPUBLISHED. ALL RIGHTS RESERVED UNDER THE COPYRIGHT LAWS.</small>		HUBBELL POWER SYSTEMS TRANSITION, CAST	
TITLE TRANSITION, CAST SIZE 1.5" RCS TD 2.875" PIPE	DWG NO. SA1500896	DO NOT SCALE THIS DRAWING	SHEET 1/1
SB REV	DWN BY JCA	DATE 3/08/11	DATE 3/08/11