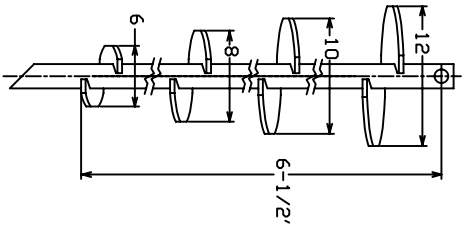
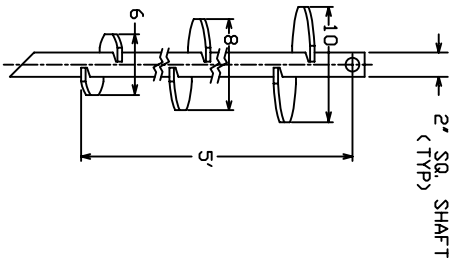


# SS200 LEADS

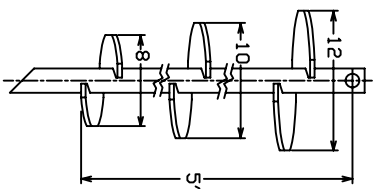
TORQUE STRENGTH RATING-16,000 FT.-LB  
 ULTIMATE CAPACITY\* (TENSION/COMPRESSION)-150 KIP  
 \*BASED ON A TORQUE FACTOR  $\langle \leftrightarrow \rangle = 10$



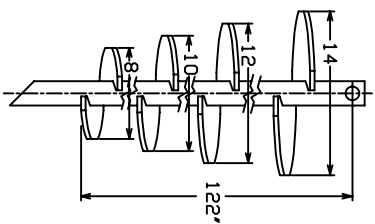
LEAD SECTION  
 C110-0571 (GALV)



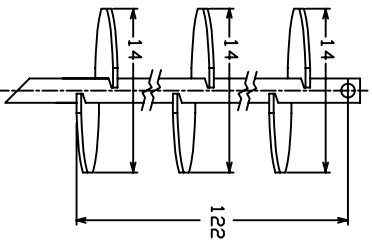
LEAD SECTION  
 C110-0569 (GALV)  
 C114-0214 (UN GALV)



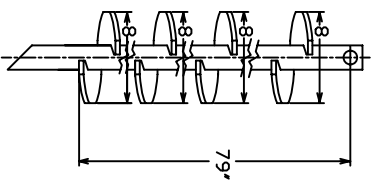
LEAD SECTION  
 C110-0570 (GALV)  
 C114-0218 (UN GALV)



LEAD SECTION  
 C110-0573 (GALV)  
 C114-0217 (UN GALV)



LEAD SECTION  
 C110-0572 (GALV)  
 C114-0216 (UN GALV)



LEAD SECTION  
 C114-0218 (GALV)

==NOTES==

1. LEAD AND EXTENSION SECTION LENGTHS AND HELIX SPACINGS ARE NOMINAL.
2. NOMINAL SPACING BETWEEN HELIX PLATES IS THREE TIMES THE DIAMETER OF THE LOWER HELIX.
3. SHAFT MATERIAL-HOT ROLLED ROUND-CORNERED-SQUARE (RCS) SOLID STEEL BARS.
4. HELIX MATERIAL-HOT ROLLED LOW CARBON STEEL SHEET, STRIP, OR PLATE.
5. COUPLING BOLT 1.125-7UNC HEX HEAD BOLT PER ASTM A193 GRADE B7 WITH HEX JAM NUT.
6. MANUFACTURER TO HAVE IN EFFECT INDUSTRY RECOGNIZED WRITTEN QUALITY CONTROL FOR ALL MATERIALS AND MANUFACTURING PROCESSES.
7. ALL WELDING TO BE DONE BY WELDERS CERTIFIED UNDER SECTION 5 OF THE AMS CODE D1. 1.

CHANCE			
CONVENTION: THE DRAWING AND THE EXCLUSIVE PROPERTY OF HUBBEL POWER SYSTEMS. NO PART OF THIS DRAWING IS TO BE REPRODUCED OR TRANSMITTED IN ANY FORM OR BY ANY MEANS, ELECTRONIC OR MECHANICAL, INCLUDING PHOTOCOPYING, RECORDING, OR BY ANY INFORMATION STORAGE AND RETRIEVAL SYSTEMS. HUBBEL POWER SYSTEMS IS NOT RESPONSIBLE FOR ANY DAMAGE TO PROPERTY OR PERSONS ARISING FROM THE USE OF THIS DRAWING.		TITLE <b>SS200 LEADS</b>	
SIZE: 1/8" DIA. DO NOT SCALE	PROJ NO: SCSA110-0571	DRAWN BY: KSH	DATE: 3/22/05
SHEET 1/1		REV:	